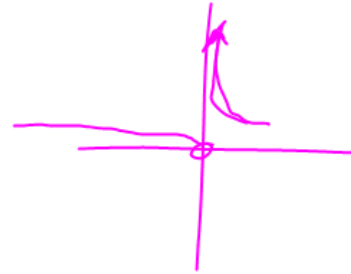


α5 $f(x) = e^x, x \neq 0$

$$\lim_{x \rightarrow 0^+} f(x) = e^{\infty} = \infty$$



$$\lim_{x \rightarrow 0^-} f(x) = e^{-\infty} = \frac{1}{e^{\infty}} = 0$$

p. 306

1, 3, 5, 11, 15, 21, 29