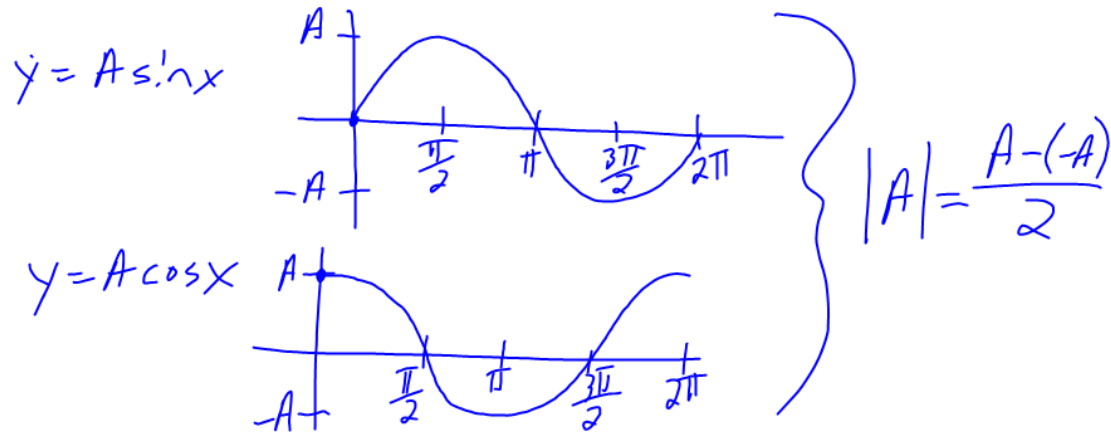


Amplitude

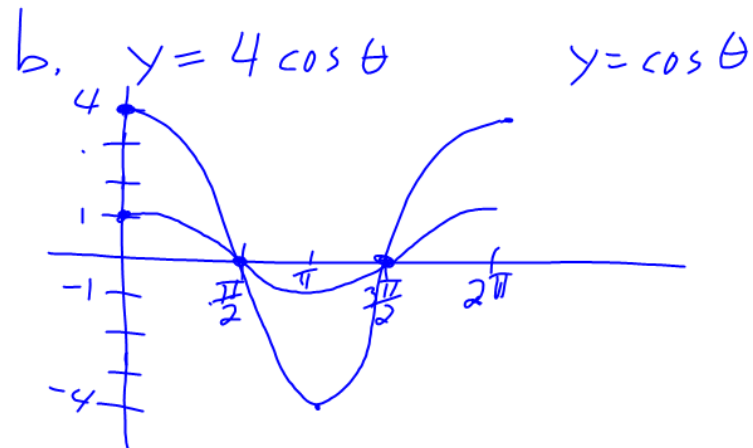
$$y = A \sin x \quad y = A \cos x$$

$$\text{Amplitude} = |A|$$



ex. 1 a. $y = 4 \cos \theta$

$$\text{Amplitude} = |4| = 4$$

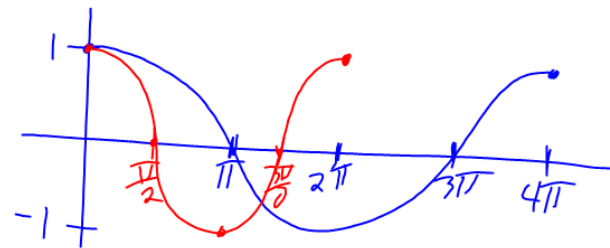


Period $y = \sin k\theta$ $y = \cos k\theta$

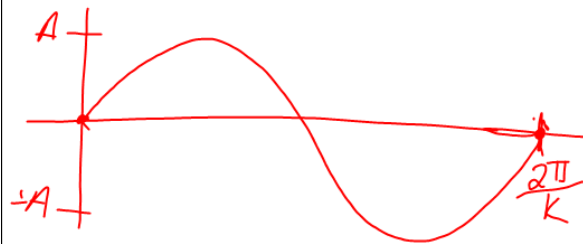
$$\text{Period} = \frac{2\pi}{k}, \quad k > 0$$

ex. 2 a. $y = \cos \frac{\theta}{2} = \cos \frac{1}{2}\theta$ $k = \frac{1}{2}$
 $\text{Period} = \frac{2\pi}{\frac{1}{2}} = 2\pi \cdot 2 = 4\pi$

b. $y = \cos \frac{\theta}{2}$ $y = \cos \theta$



$$y = A \sin k\theta$$



$$y = A \cos k\theta$$

